

CERTIFICATE OF LOCATION OF GOVERNMENT CORNER

NORTHEAST Corner of Section 24, Township 107, Range 40, 5TH P.M.

STATE OF MINNESOTA, County of MURRAY

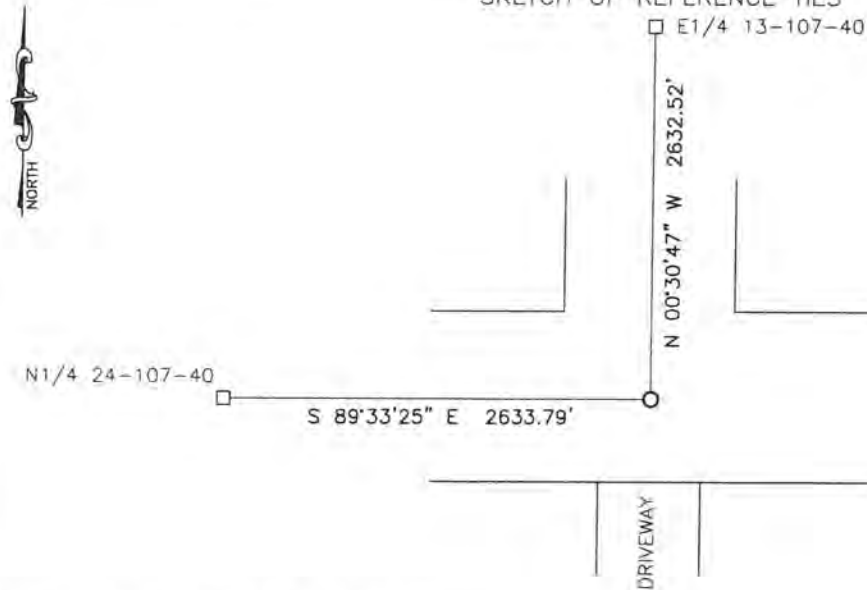
At the corner location shown on the sketch:

On 7/18/17 found a D.N.R. Monument

left monument as found, lowered monument, removed monument (explain)

On _____ placed a _____

SKETCH OF REFERENCE TIES



Minnesota State Plane Coordinate
System Murray County Datum
NAD83 (1996)

N: 179297.884
E: 548381.093

Statement of evidence relative to this corner location is on back of page.

I hereby certify that this document and the data contained herein was prepared by me or under my direct supervision

[Signature]
SIGNATURE

9/18/17
DATE

Registration No. 43844

- Land Surveyor, Professional Engineer
 County Surveyor, County Engineer

STATE OF MINNESOTA, } ss.
COUNTY OF MURRAY, }

I hereby certify that the within Instrument was filed in this office for record on the 12TH day of OCTOBER A.D. 20 17 at 11:00 o'clock A: M. and was duly recorded as Document No. _____

[Signature]
County Recorder

Statement of Evidence

In 1861, L. Brockmann did the original subdivision of the township.

In October, 1898, J.W. Woolstencraft shows a 12"x12"x30" stone at the corner.

In October, 1907, J.W. Woolstencraft shows a stone found at the corner.

In 1964, D.N.R. Bureau of Engineering shows an iron pin was found at the corner.

In 1971, D.N.R. Bureau of Engineering found a spike and replaced it with a railroad spike.

In 1974 and 1976, D.N.R. Bureau of Engineering shows a railroad spike was found at the corner.

On July 2, 1985, D.N.R. Bureau of Engineering dug with a backhoe and found a railroad spike over a 3/4"x12" rebar. They accepted the rebar and replaced it with a 1-1/4"x 1-1/4"x 20" perforated steel tube with aluminum cap stamped "D.N.R. SURVEY MARKER."

On July 18, 2017, Bueltel-Moseng Land Surveying found a D.N.R. Monument with aluminum cap stamped "D.N.R. SURVEY MARKER."